



YONSEI  
UNIVERSITY

# Yonsei Housing Introduce

Muak Woojungwon

SKG International House

# Index

1. Campus Map

2. Things you should know

3. House Introduce

Muak

Woojungwon

SK Global House

INT'L House



YONSEI  
UNIVERSITY

# 01 Campus Map

## Shuttle Bus Route

- Muak dorm > WJW dorm > Underwood B/D runs throughout the day
- No express bus to KLI or other building
- The schedule will be shortened during the summer and winter seasons.

## Get to the house

- Hongdae St. to Muak/WJW dorm takes 10 mins by car, 45 mins by walk
- Sinchon St. to SK house takes 12 mins by car, 30 mins by walk
- WJW house to SK house takes 12 mins by walk

Muak  
1 to 4

Woojungwon  
House (WJW)

SK Global &  
INTL House

Korean Language  
Institute (KLI)



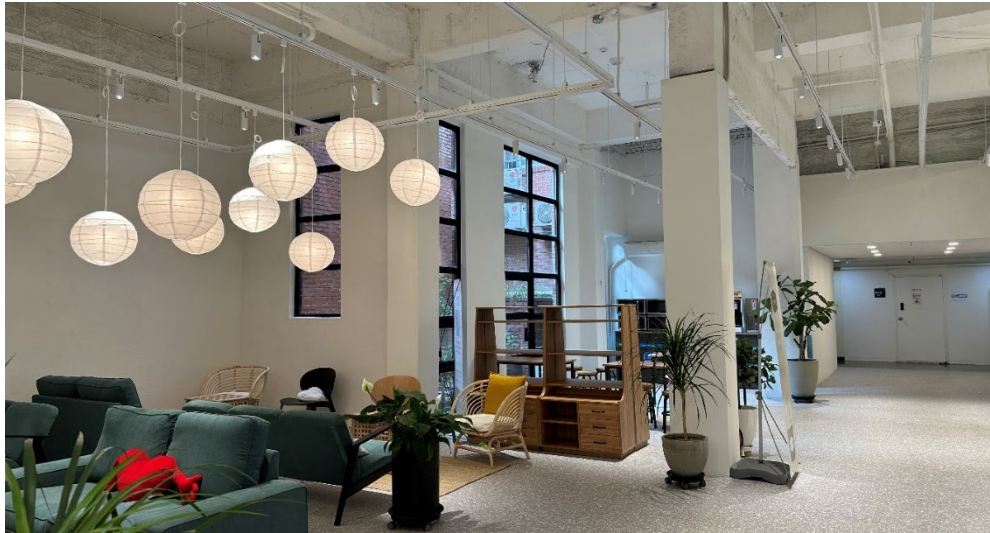
To Sinchon

# 02 Things you should know



- A. **House provides** furniture, a duvet, a bedsheet, and a pillowcase.  
Bring your daily supplies - towels, washes, papers, and others
- B. Korea provides **220v/60Hz power type**. Do not bring an unsuitable hair dryer or hair iron. It burns our power outlet and the responsibility lies with you.
- C. **Shuttle bus** from Muak dorm > WJW dorm > Underwood B/D runs vary throughout the day
- D. **No curfew** but the campus gate closes at midnight. (No vehicles afterward)
- E. **Dormitory cafeteria** – at Muak 2, Beophyun House and Student Union
- F. Meal plan is not covered in dormitory fee

# 03 House Introduce: Complex facilities



## at Muak 2

- Cafeteria and Café
- 24/7 Store by Emart
- Public Lounge



\* Cafeteria opens Mon to Fri, serves breakfast, lunch and dinner

# 03 House Introduce: Muak 1 for Male



## Features

- Twin room
- No elevator, communal bathroom on each floor
- Small gym, store, and laundry room at B1

\*Visit Muak 3 or 4 to use the Kitchen

# 03 House Introduce: Muak 2 for Female



## Features

- Twin room
- No elevator, communal bathroom on each floor
- Laundry room and complex facilities on B1

\*Visit Muak 3 or 4 to use the Kitchen and the Gym

# 03 House Introduce: Woojungwon



## Features

- Twin room with private bathroom
- Gym, Kitchen, Store, and the laundry room on B1

# 03 House Introduce: Woojungwon



## Features

- **Triple Bunkbed room** Available for YISS, WAY students when it's necessary
- **Private bathroom**

# 03 House Introduce: Woojungwon



# 03 House Introduce: Complex facilities



## at SK Global House

- Restaurants and Café
- 24/7 Store by Emart24
- Connected to SK Global House, KLI Building, and New Millennium Hall

# 03 SKG & INT' L at a glance



Dorm types	SK GLOBAL HOUSE		INT'L HOUSE
Room types	Single Room	Double Room	Double Room ONLY
Small fridge	Yes	No	Yes
Gender	Female & Male		Female only
Bathroom	Private bathroom		communal bathroom on each floor
Facilities	Study Room, Lounge, Laundry Room, Music Room (Guitar & Piano), Fitness room		Lounge, Laundry Room, Exercise room
	✓ Music Room, fitness room, Exercise room is shared by the residents of either residence.		
Kitchen	Common kitchen on the B2 floor		Common kitchen on the 1st floor
Furnishing	Single size bed, closet, desk, desk lamp, chair, book case, window shade		
Linens provided	Duvet, bed sheet, pillow, pillow cover		
Laundry	Washing machines, Dryers in the laundry room (1,300 won per one use)		
Curfew	No		
Meals	Not included / Meal plan not available		
Internet	Free school WI-FI (available after the program starts) /Lan connection in each room		

# 03 House Introduce: SK Global House



## Features

- Single / Twin room with private bathroom
- Gym, Kitchen, Music room, Lounge, Laundry room
- Floors are separated by gender

# 03 House Introduce: SK Global House



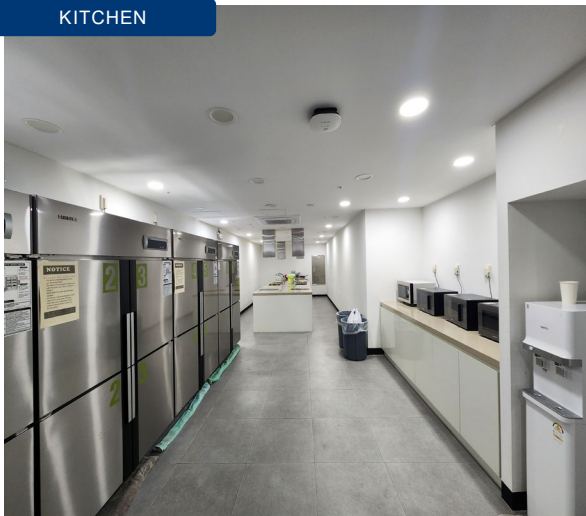
LOUNGE



FLOOR LOUNGE



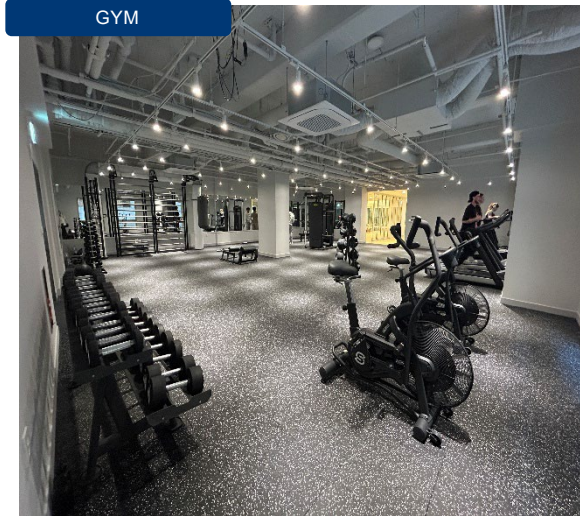
PILATES ROOM



KITCHEN



LAUNDRY ROOM



GYM

# 03 House Introduce: INT' L House



## Features

- Twin room with communal bathroom on each floor
- Lounge, Laundry room, Kitchen, Exercise room

\*Visit SKG House to use the Gym & the Music room